

# Eye-catching colour labels, printed on-demand



# Streamline your colour label production

Print eye-catching custom colour labels when you need them with our on-demand printers. Two stage printing and wasteful pre-ordering are a thing of the past with Epson ColorWorks. Now you can print full colour labels first time, using your own designs and in quantities you will actually use.

## A new way to produce colour labels

Epson's ColorWorks label printers have the power to completely revolutionise the way you print colour labels on-demand so you can take full control of the production process.

### Media

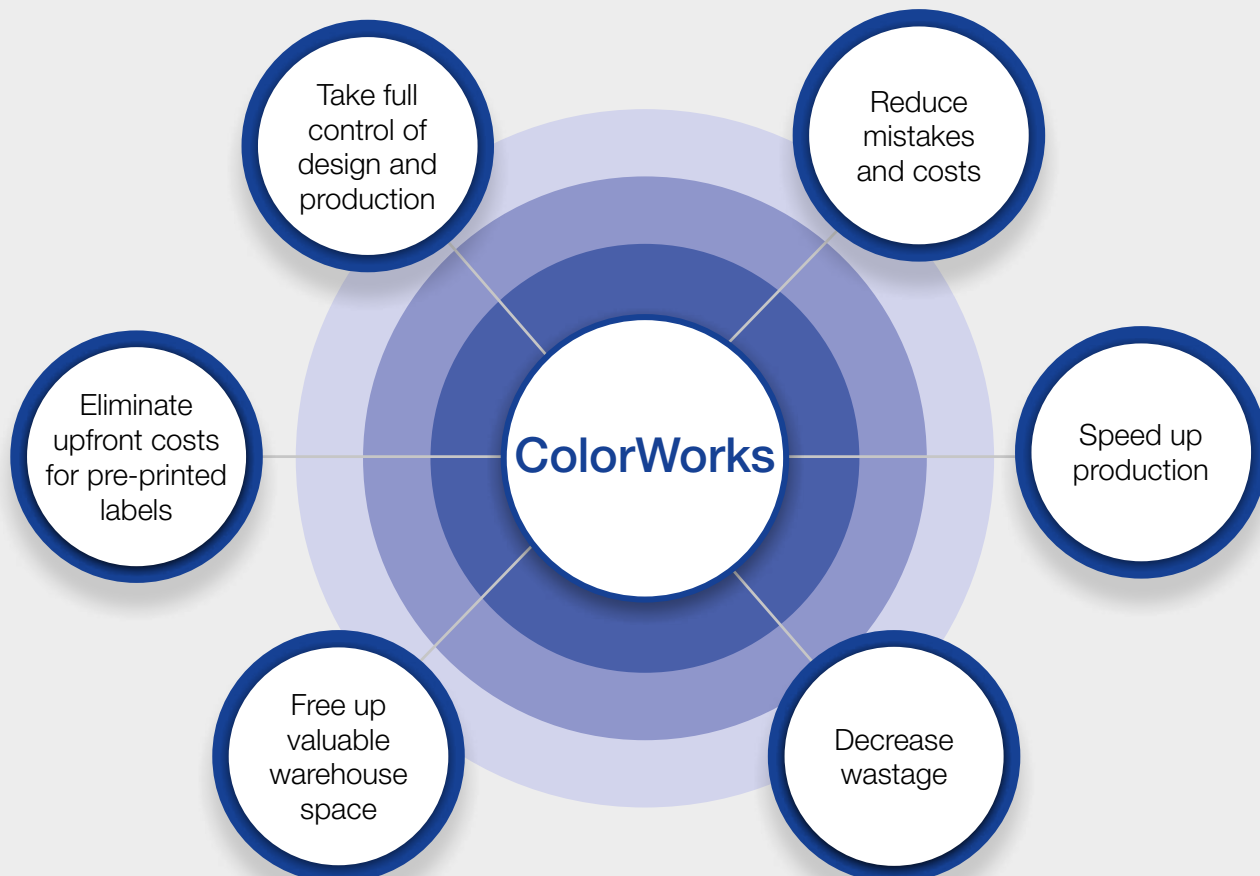
Only blank rolls of label media are required.

### Printing

Entire label content can be printed on demand.

### Flexibility

Print different colours and label information at the same time.



## The value of colour on-demand



### Save money

Save money by not storing different pre-printed colour labels, just print when you need them. You can now control the whole label-printing process.



### Save time

Stop wasting time searching for and changing to the correct pre-printed labels. Save time wasted by changing pre-printed rolls.



### Add flexibility

Produce unique individual labels as you require them. Change designs on the fly and print only the labels you need.



### Increase speed

Print in full colour at the speed your business needs. Reduce your total full colour label production time.



### Eliminate unexpected charges

Cut out third-party charges for custom pre-prints. Reduce label creation errors, as well as late deliveries and penalties.



### Eliminate label waste

No wasted labels due to last-minute design changes. No need to order pre-printed labels you don't need to ensure enough buffer stock.



### Massively reduce label inventory

No more shelves full of pre-printed rolls of labels. Order and stock only one type of label - blanks.

# Product labelling

Manufacturers and retailers can create engaging colour labels on demand which stand out on products and packaging. Add colour coding and images to box labels for easy reference.

## **Personalise packaging**

Explore new marketing possibilities with short-run labelling and set your products and brand apart with customisable colour label printing.

## **Highlight key product information**

Clearly highlight information on labels and print specialty labels on demand.

## **Manage inventory**

Control stock and product movement with easy-to-track labels. Reduce production errors with colour-coding or pictures on labels to confirm container contents.







# Chemical labels (GHS)

Clear, high quality chemical labels ensure efficiency of operation, clarity of instructions and safety of workers.

## **Remain compliant**

Produce fully-compliant chemical labels that meet GHS standards and easily update them when required.

## **Streamline label production**

Quickly and accurately print all labels in a single straightforward process And avoid ordering extra labels you don't need.

## **Produce clear images and pictograms**

Print in high-quality colour to ensure key information is displayed clearly.



# Healthcare

Colour on healthcare labels improves the visual recognition of vital information, such as patient names and dosage instructions. This reduces operational risks for hospitals, and more importantly provides better patient care and safety.

## **Produce accurate patient and dosage information**

Use colour and design to improve visual recognition of vital information, such as patient names and dosage instructions.

## **Create clear visual instructions**

Precisely and perfectly print pictograms and other visual information onto blank labels in one smooth process.

## **Reduce risk of errors**

Producing large volumes of labels that are consistent reduces the risk of errors in patient care.



# Retail

Move your shelf-edge label production in store. Whether creating labels with colourful logos, promotions or important product information, you can take care of all your shelf-edge labelling requirements.

## Improve brand recognition

Customise product packaging and improve marketing communications via unique short-run labelling applications.

## Stand out from the competition

Use of colour allows you to differentiate your products from those of competitors and helps customers instantly recognise your brand.

## Highlight important information

Clearly highlight information within a label's content, or print speciality labels on demand.





# Hospitality

Improve visitor safety, enhance your brand image and add customised adverts, turning visitor passes into promotional tools for your company.

## **Create professional-looking tickets**

Print individually designed tickets and ID badges in full colour, on-demand to enhance brand recognition.

## **Customise promotions to boost sales**

Customise tickets and ID cards with promotional or personalised information. Add advertisements and other promotional information relevant to ticketholders to boost future sales.

## **Improve security with visual ID**

Add full colour photos to ID cards, for ease of visual identification.

# Food and catering

Create engaging colour labels that stand out on packaging and products on demand. Customise labels for increased brand awareness and show important information clearly even in small areas with high resolution printing.

## Show key product information

Protect customers and your business by clearly highlighting important information, such as food allergens and nutritional information, with full-colour traffic-light labelling systems.

## Create eye-catching special offers

Use colour to differentiate your products from those of your competitors. Highlight price changes and create eye-catching special offers.

## Increase customer loyalty

Highlight brands with quality colour printing. Upsell products and increase profit margins by personalising labels.

## Epson inks comply with Food Contact Materials regulations

### Product

ColorWorks CW-C3500  
ColorWorks CW-C7500  
ColorWorks CW-C7500G  
ColorWorks CW-C6000 Series  
ColorWorks CW-C6500 Series

### FCM-compliant inks

SJIC22P Series  
SJIC26P Series  
SJIC30P Series  
SJIC36P Series  
SJIC36P Series

## Compliance standards

Under appropriate condition of use Epson ColorWorks inks comply with:

- EU Framework Regulation (EC) No. 1935/2004
- EuPIA (GMP) Printing inks For Food Contact Materials 4th revision March 2016
- Plastic Implementation Measure (PIM) EU No. 10/2011
- EuPIA Exclusion Policy for Printing inks and related Products (Nov 2016)
- Good Manufacturing Practices (GMP) (EC) No. 2023/2006
- FDA CFR21 (cGMP, HACCCP, paper materials)
- Swiss Ordinance on Materials and Articles in Contact with Food SR817.023.21 Annex 10
- Heavy Metal CONEG legislation 9
- EU Toy Standard EN71 (Parts 3,9, 12)
- SVHC under REACH compliance



Make on  
Sunday  
25 Nov 17:11

**EAT FRESH!**

TUNA MAYO  
WHITE SANDWICH



0.5g Fat  
1.5g Sat Fat  
1.5g Sugar  
1.5g Salt

Clear Price: F  
Last for up to 26 Nov (ex)



Make on  
Sunday  
25 Nov 17:11

**EAT FRESH!**

EGG & CRESS  
WHITE SANDWICH



0.5g Fat  
1.5g Sat Fat  
1.5g Sugar  
1.5g Salt

Clear Price: F  
Last for up to 26 Nov (ex)



Make on  
Sunday  
25 Nov 17:11

EGG  
WHITE SANDWICH

# Warehouse and logistics

Improve inventory management and product identification to help large and complex supply chains connected and running smoothly.

## **Improve traceability with colour coding**

Help ensure the right products go to the right place

## **Reduce supply chain errors**

Use colour to make labels easier to track and avoid mistakes

## **Save costs, reduce waste**

Be more cost-efficient in your label production by reducing waste and eliminating the upfront costs of pre-printed labels.

## **Current challenges**

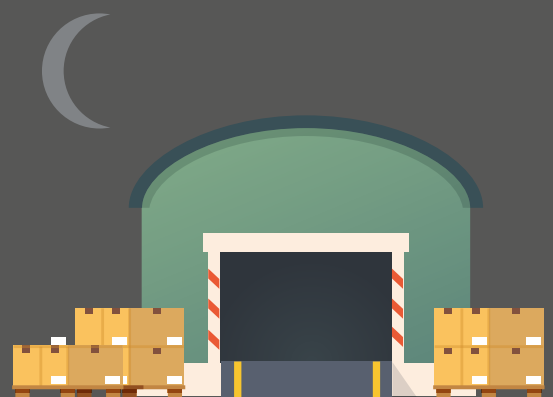
Labels are pre-printed, which is expensive and takes up a huge amount of space





Manual process of selecting box labels often leads to costly mistakes

Inflexible, slow label operations hinder productivity and delivery times



# Print and Apply

The C6500 series label printers support colour printing and variable data processing and can be integrated directly into production lines, reducing steps in the manufacturing process and increasing efficiency.

Utilise the time-saving, automatic backing-paper removal function to easily apply labels to products. This exclusive function amongst inkjet label printers integrates simply and seamlessly with Print & Apply applications.



# Wide range of media

The Tested by Epson for ColorWorks programme provides information on Epson-tested media solutions that are manufactured by industry-leading companies.



## Premium matte ticket

Ideal for ticketing, ID badges, shelf tags and signs.

Fast drying

Scratch and water resistant

Optimised for high-quality photorealistic graphics



## High-gloss label

Ideal for product labels and box labels for consumer products.

Permanent acrylic adhesive

Fast drying

Resistant to heat, smudging, water and other liquid damage



## BOPP high-gloss label

Ideal for product labels for consumer products.

Water-borne acrylic permanent adhesive

Resistant to water and many other liquids



## Premium matte label

Ideal for barcode labels, box labels for consumer products and pharmaceutical labels.

Photo-quality printing

Resistant to heat, smudging, scratches, water and other liquids



## PE matte label

Ideal for GHS chemical labelling applications.

Smudge-proof

Excellent UV-stability and heat resistance

Resistant to water and most chemicals



## BOPP satin-gloss label

Ideal for product labels for consumer products.

Water-borne acrylic permanent adhesive

Resistant to water and many other liquids

Visit [www.epson.co.uk/testedforcolorworks](http://www.epson.co.uk/testedforcolorworks) for the latest information on tested media

# ColorWorks C7500 series

Ideal for high-volume printing where durability is key. The Epson ColorWorks C7500 Series sets new standards for reliable, high-speed, high-quality colour label printing that meets manufacturers' labelling needs.





## Reliable and consistent

Deliver outstanding performance that can be relied on in industrial environments.

## Fast

Print at speeds of 300mm/sec even at high resolutions of 600 × 1200dpi.

## Reassuring

Complete peace of mind. Epson covers everything (including the printhead) as long as the printer is covered under warranty/CoverPlus.

## Robust

Epson's proprietary PrecisionCore printhead ensures labels are produced consistently for the printer's whole life.

## Cost effective

Keep down costs with efficient, high-capacity individual ink cartridges. Save time and money with on-demand printing.

## Easy integration

Use our new ESC/Label programming language to integrate seamlessly with virtually any OS.

## High quality

Print high-quality labels for food and beverage products, packaging and boxes, as well as EU energy labels and GHS labels.

### ColorWorks C7500

Ideal for prints where durability is key

DURABrite Ultra pigment ink  
Prints best on matte media

### ColorWorks C7500G

Perfect when print quality is essential

UltraChrome DL pigment ink  
Prints best on glossy media

# ColorWorks C6000 series

Print long-lasting customised labels quickly and easily. Produce high-quality (1200x1200dpi), custom labels time after time. The C6000 offers up to 4-inch print-widths and the C6500 delivers labels up to 8-inches. Optimise workflows using our unique built-in peeler.



## Customised communication

Print labels 25mm-208mm wide on glossy, matte or textured substrate. Print on any shape, without needing a second die cut, using the unique movable sensor, and colour-match brand logos accurately.

## Easy integration

Connect with Windows, Linux, Mac/iOS and SAP. Epson's ESC/Label programming language is compatible with most label drivers.

## Remote configuration and maintenance

Manage and send updates to printer fleets easily with an intelligent web interface.

## Long-lasting labels

Print durable labels with UltraChrome DL pigment inks.

## Easy operation

Load labels from two different sides for ease of use. Remove paper jams easily with four points of access. Use the large (2.7 inch) LCD screen for convenient one-step variable data processing.

## Maintenance-free

Forget about replacing the printhead or other working parts – they are covered under warranty for 1 year, with extra CoverPlus option also available.

## Exclusive built-in peeler

Save time with automatic backing paper removal, a unique function amongst inkjet label printers. The peeler integrates with Print & Apply applications.

### ColorWorks C6500Ae

Ideal for bespoke, flexible colour labelling

For labels 8 inches wide

Built-in autocutter

### ColorWorks C6000Ae

Ideal for bespoke, flexible colour labelling

For labels 4 inches wide

Built-in autocutter

### ColorWorks C6500Pe

Ideal for bespoke, flexible colour labelling

For labels 8 inches wide

Built-in peeler

### ColorWorks C6000Pe

Ideal for bespoke, flexible colour labelling

For labels 4 inches wide

Built-in peeler



# ColorWorks C3500

Simple to use, flexible and compact it allows you to print anything from a wristband, ticket or ID badge to a durable synthetic label. All this in full colour, high-quality and at a fast printing speed of up to 103mm/sec



## Easy to use and cost-efficient

Monitor ink levels and printer status with the LCD display and save when you print. A recent research report showed the ColorWorks C3500 has the lowest ink cost per print compared with two competitors<sup>1</sup>.

## Reliable

Ensure accurate barcode printing with Epson's automatic nozzle checking technology (AID) that senses and fixes clogged nozzles

## Intuitive display

Monitor ink levels and printer status on the LCD screen. Conveniently access all functions from the front of the printer, including consumables.

## Maintenance-free

Forget about replacing the printhead or other working parts – they last for the lifetime of the printer.




## Durable prints

Produce long-lasting prints that resist smudging, fading and most liquids with Epson DURABrite Ultra pigment ink.

## Versatile

Create high-quality prints on a wide range of materials, including matte and glossy-coated paper and synthetic media in a wide range of formats and sizes. Re-use smudge, water and fade resistant passes repeatedly.



Model	CW-C7500	CW-C7500G	CW-C6000AE
			
Print Head	PrecisionCore MicroTFP Line printer	PrecisionCore MicroTFP Line printer	µTFP4
Resolution (dpi)	600 × 1,200dpi	600 × 1,200dpi	1200 × 1200dpi
Ink Colours	4 colours	4 colours	4 colours
Ink Capacity	295ml	295ml	80ml
Supported Media	Matte label, Matte film label, Glossy label, Glossy Film label, High Glossy label	Matte label, Matte film label, Glossy label, Glossy Film label, High Glossy label	Matte label, Matte film label, Glossy label, Glossy Film label, High Glossy label
IO Port	Yes	Yes	Standard
Printing Direction	Fixed	Fixed	Bi-directional or Unidirectional
Label Length	600mm	600mm	609.6mm
Size (W × D × H)	392 × 598 × 395mm	392 × 598 × 395mm	340 × 565 × 326mm
Print speed (in full-width)	Max. 300mm/sec at 600 × 1,200dpi (printing width 108mm)	Max. 300mm/sec at 600 × 1,200dpi (printing width 108mm)	119 mm/s (Max Speed 300 × 600dpi) 75 mm/s (Speed 600 × 600dpi) 48 mm/s (Normal 600 × 600dpi) 18 mm/s (Quality 600 × 1200dpi) 8 mm/s (Max Quality 1200 × 1200dpi)
Paper Roll Diameter	203.2mm / 8"	203.2mm / 8"	203.2mm / 8"
Paper Width	50 to 112mm	50 to 112mm	25.4 to 112mm
Print Width	Up to 108mm	Up to 108mm	Up to 108mm
Peeler / Autocutter	Autocutter	Autocutter	Autocutter

**CW-C6000PE**

µTFP4
1200 × 1200dpi
4 colours
80ml
Matte label, Matte film label, Glossy label, Glossy Film label, High Glossy label
Standard
Bi-directional or Unidirectional
609.6mm
340 × 565 × 326mm
119 mm/s (Max Speed 300 × 600dpi)
75 mm/s (Speed 600 × 600dpi)
48 mm/s (Normal 600 × 600dpi)
18 mm/s (Quality 600 × 1200dpi)
8 mm/s (Max Quality 1200 × 1200dpi)
203.2mm / 8"
25.4 to 112mm
Up to 108mm
Peeler

**CW-C6500AE**

µTFP4
1200 × 1200dpi
4 colours
80ml
Matte label, Matte film label, Glossy label, Glossy Film label, High Glossy label
Standard
Bi-directional or Unidirectional
609.6mm
444 × 512 × 326mm
85 mm/s (Max Speed 300 × 600dpi)
49 mm/s (Speed 600 × 600dpi)
34 mm/s (Normal 600 × 600dpi)
13 mm/s (Quality 600 × 1200dpi)
6 mm/s (Max Quality 1200 × 1200dpi)
152.4mm / 6"
25.4 to 215.9mm
Up to 211.9mm
Autocutter

**CW-C6500PE**

µTFP4
1200 × 1200dpi
4 colours
80ml
Matte label, Matte film label, Glossy label, Glossy Film label, High Glossy label
Standard
Bi-directional or Unidirectional
609.6mm
444 × 512 × 326mm
85 mm/s (Max Speed 300 × 600dpi)
49 mm/s (Speed 600 × 600dpi)
34 mm/s (Normal 600 × 600dpi)
13 mm/s (Quality 600 × 1200dpi)
6 mm/s (Max Quality 1200 × 1200dpi)
152.4mm / 6"
25.4 to 215.9mm
Up to 211.9mm
Peeler

**CW-C3500**

Serial
720 × 360dpi
4 colours
32ml
Matte label, Matte film label, Glossy label, Glossy Film label, High Glossy label
No
Bi-directional or Unidirectional
1117mm
310 × 283 × 261mm
Max. 103mm / sec at 360 × 360 DPI (printing width 56mm)
101.6mm / 4"
30 to 112mm
Up to 104mm
Autocutter

1. Research carried out by TÜV Rheinland LGA Products GmbH, August 2014.

For more information please contact:

Home users: 0343 90 37766  
Business users\*: 0871 42 37766  
Republic of Ireland: 01 436 7742



EpsonUK



@EpsonUK



@EpsonUK



epson-uk-ltd

Or visit us at [www.epson.co.uk/contactus](http://www.epson.co.uk/contactus)

\* 10p per minute plus network extras.

Trademarks and registered trademarks are the property of Seiko Epson Corporation or their respective owners.  
Product information is subject to change without prior notice.

**EPSON®**